

EUROPA 100



MCP YACHTS
WORLDWIDE YACHTING

EUROPA 100



FOR MORE INFORMATION ABOUT OUR PRODUCTS AND/OR A PRIVATE SHOWING, PLEASE CALL US AT: AT: +55 13 3354-2356. YOU CAN ALSO E-MAIL US AT: MCPYACHTS@MCPYACHTS.COM

MCP YACHTS
WORLDWIDE YACHTING

EUROPA 100



FOR MORE INFORMATION ABOUT OUR PRODUCTS AND/OR A PRIVATE SHOWING, PLEASE CALL US AT: AT: +55 13 3354-2356. YOU CAN ALSO E-MAIL US AT: MCPYACHTS@MCPYACHTS.COM

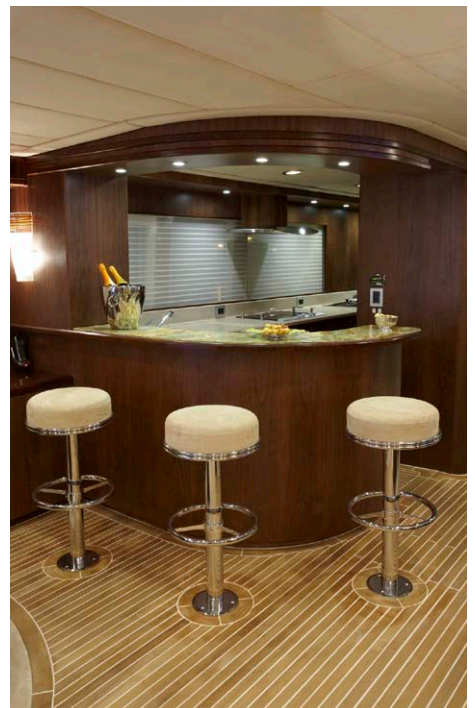
SUN DECKS - EUROPA 100



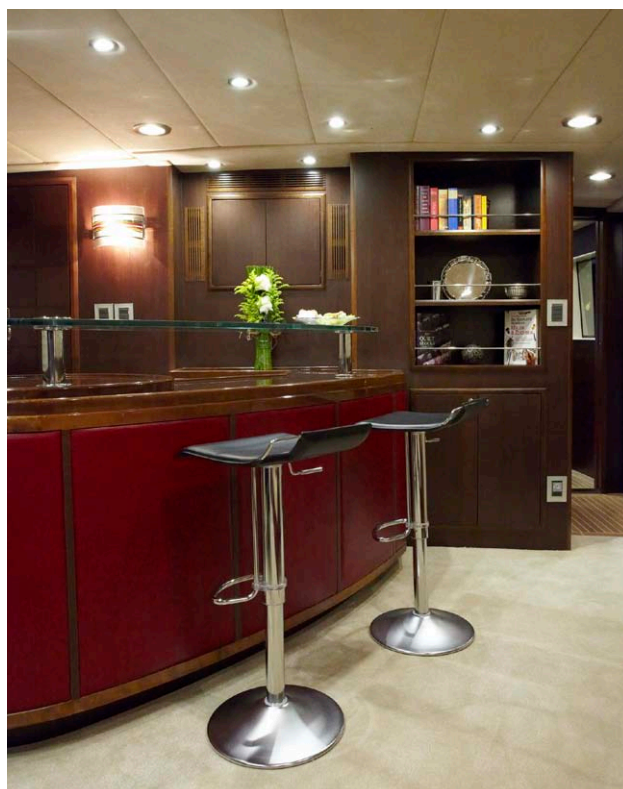
EUROPA 100



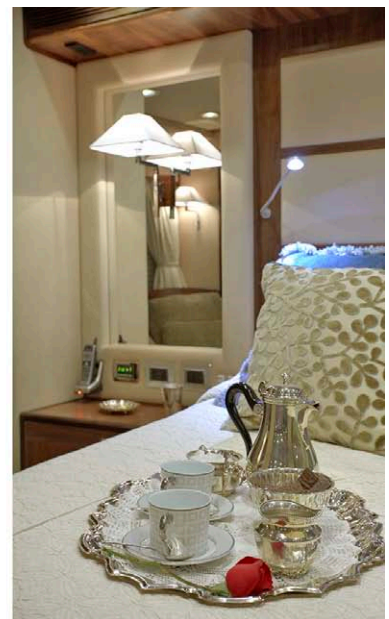
MAIN SALOON - EUROPA 100



SKY LOUNGE - EUROPA 100



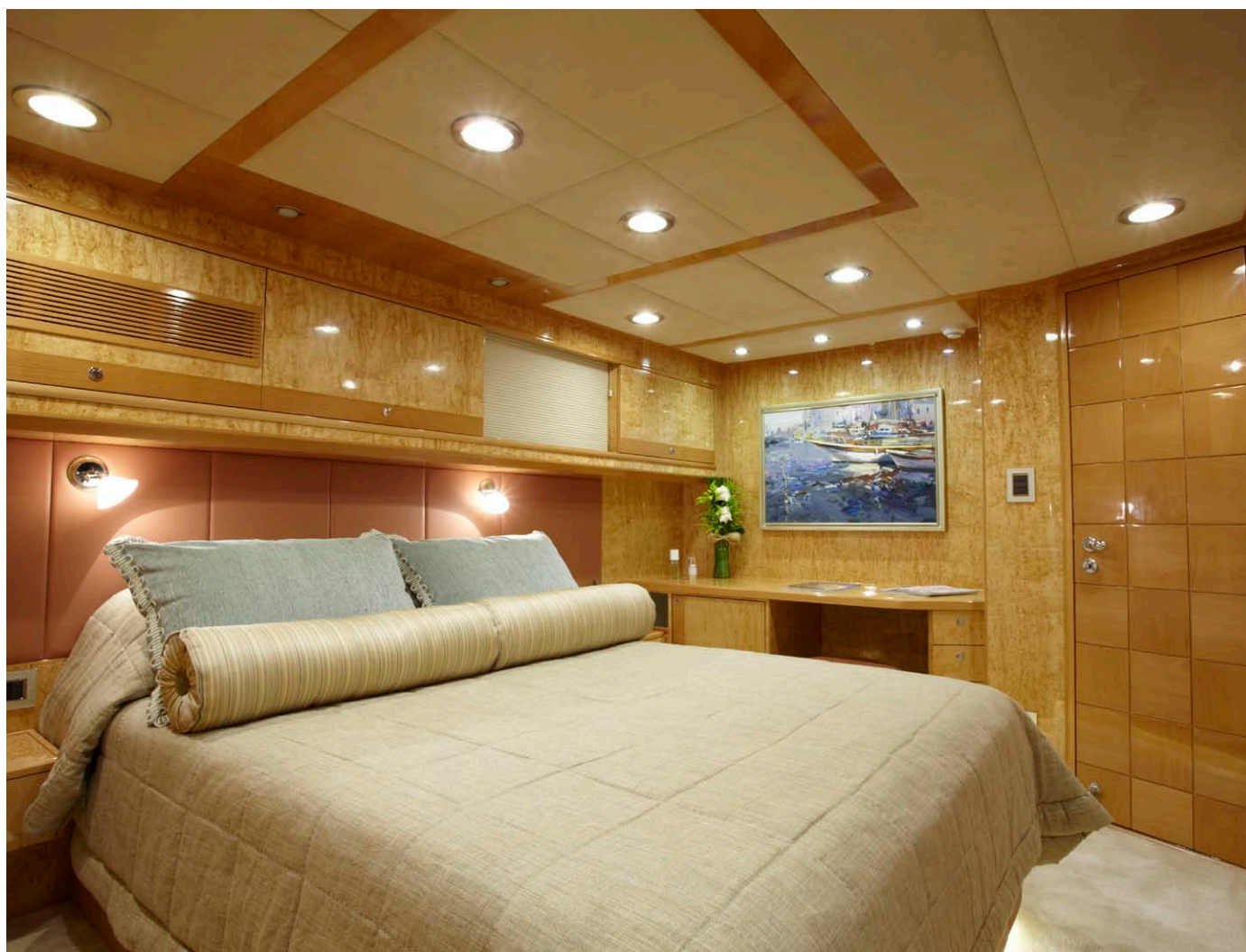
OWNERS CABIN - EUROPA 100



OWNERS CABIN - EUROPA 100



VIP CABIN - EUROPA 100



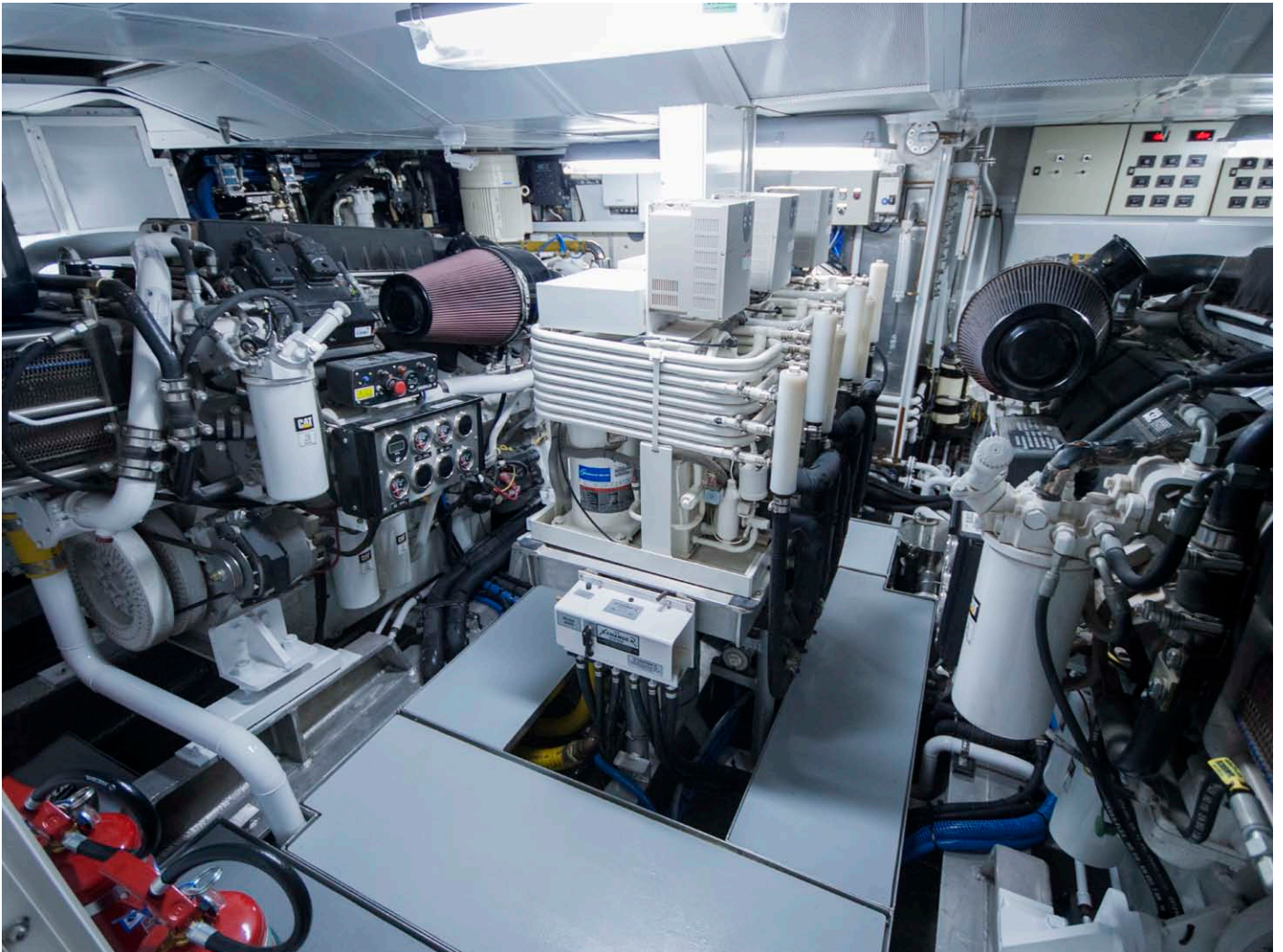
GUEST CABIN - EUROPA 100



WHEELHOUSE - EUROPA 100



ENGINE ROOM - EUROPA 100



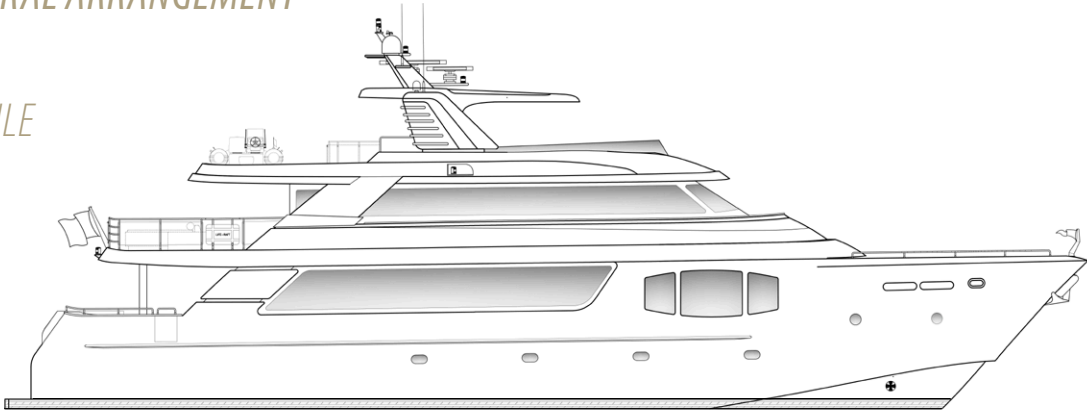
MAIN PARTICULARS

TECHNICAL DATA

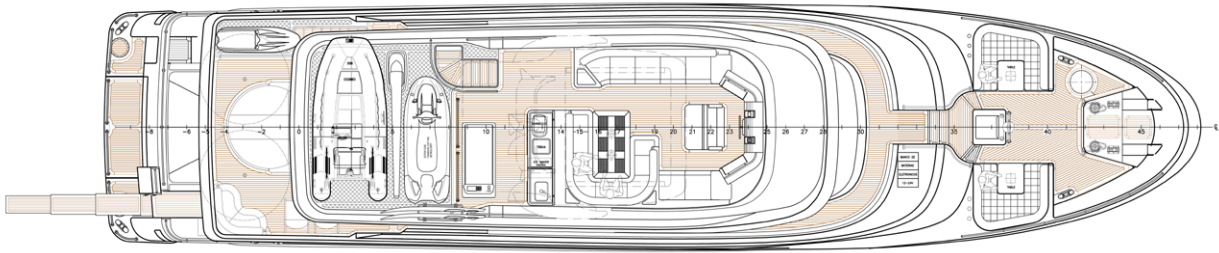
LENGTH OVERALL:	29,87 M (100')	HULL DESIGN:	MCP TEAM
LBP:	21,28 M	EXTERNAL DESIGN:	MCP TEAM
MAXIMUM BEAM:	6,58 M	INTERIOR DESIGN:	OVERSEE YACHTS / MCP YACHTS
MAXIMUM DRAFT:	2,02 M	STABILIZERS:	NAIAD DYNAMICS
MAXIMUM DISPLACEMENT:	101,69 TON	BOW/STERN THRUSTERS:	NAIAD
LIGHT DISPLACEMENT:	77,89 TON	ENGINES:	2 X CAT C32 ACERT - 1825 BHP
DIESEL CAPACITY:	21.570 L	FLAG:	BRA OR INTERNATIONAL
FRESH WATER CAPACITY:	4.500 L	CLASSIFICATION :	MCA/MI COMMERCIAL
FAST CRUISING SPEED:	20 KNOTS	NIGHT SLEEP:	11 + 5 (CREW)
TOP SPEED:	23 KNOTS	CABINS:	5 + 2
AUTONOMY:	3.500 NM	HEADS:	7 + 2
TYPE:	SEMI DISPLACEMENT		
HULL CLASSIFICATION:	LLOYD'S REGISTER		
HULL MATERIAL:	ALUMINUM		
SUPERSTRUCTURE MATERIAL:	ALUMINUM		

GENERAL ARRANGEMENT

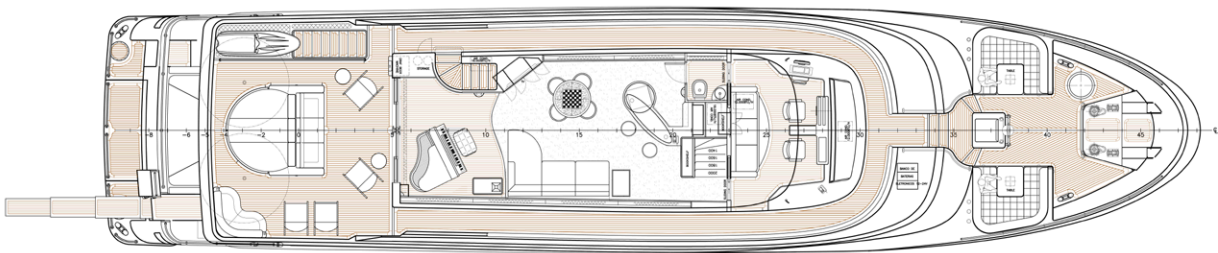
PROFILE



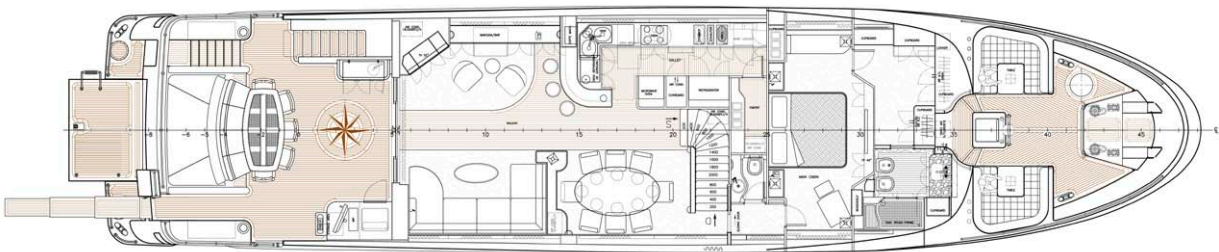
FLYBRIDGE



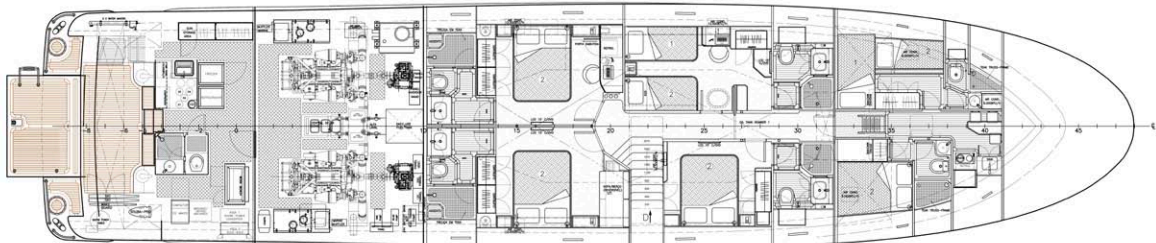
BRIDGE DECK



MAIN DECK



LOWER DECK



RUA HERMÍNIO TAMILOLO, 60

GUARUJÁ, SP/BRAZIL -11420-750

PHONE: 55 13 3354-2169

WWW.MCPYACHTS.COM