

*GFT 92*



# GFT 92





# GFT 92



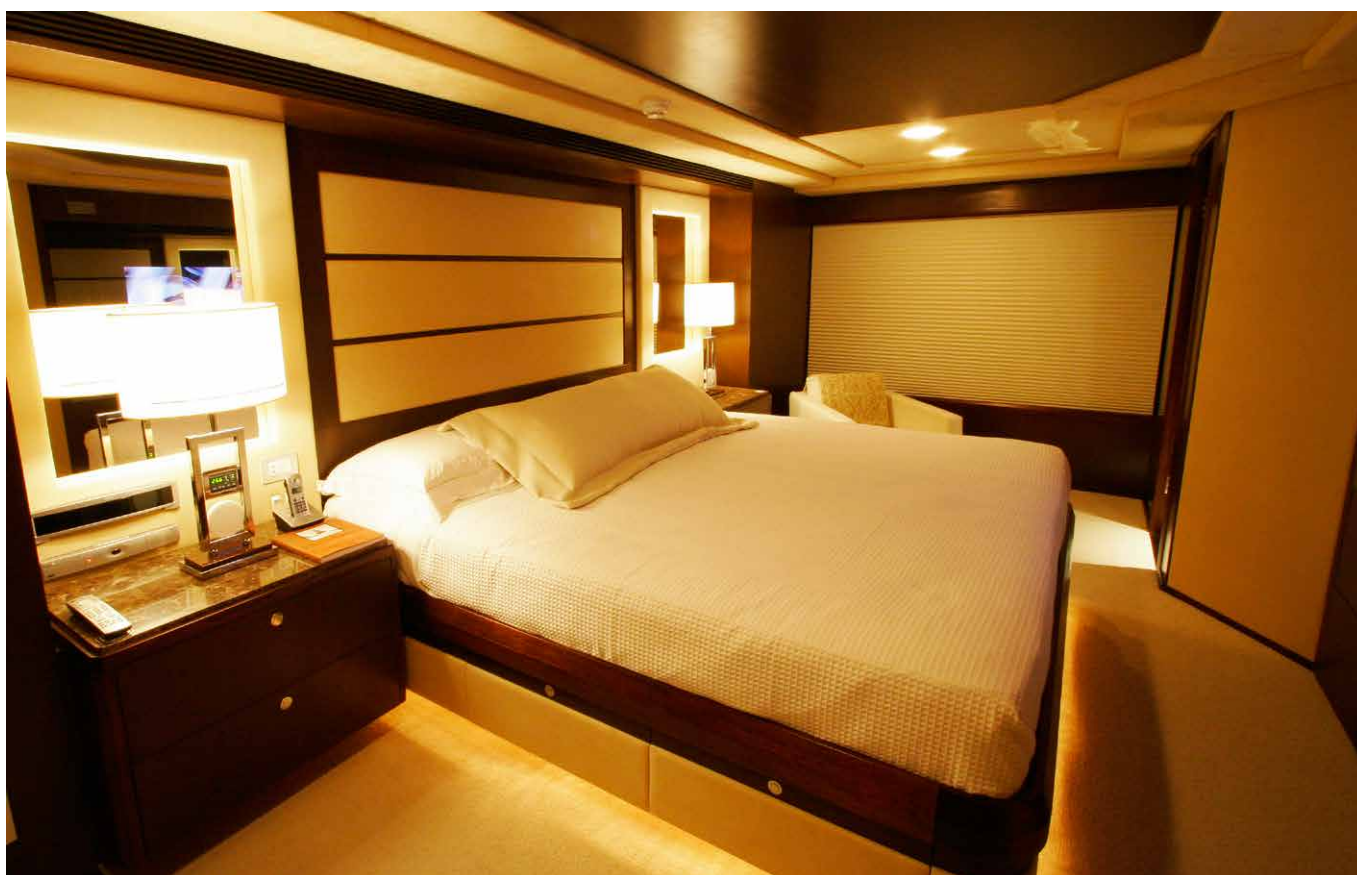


# GFT 92

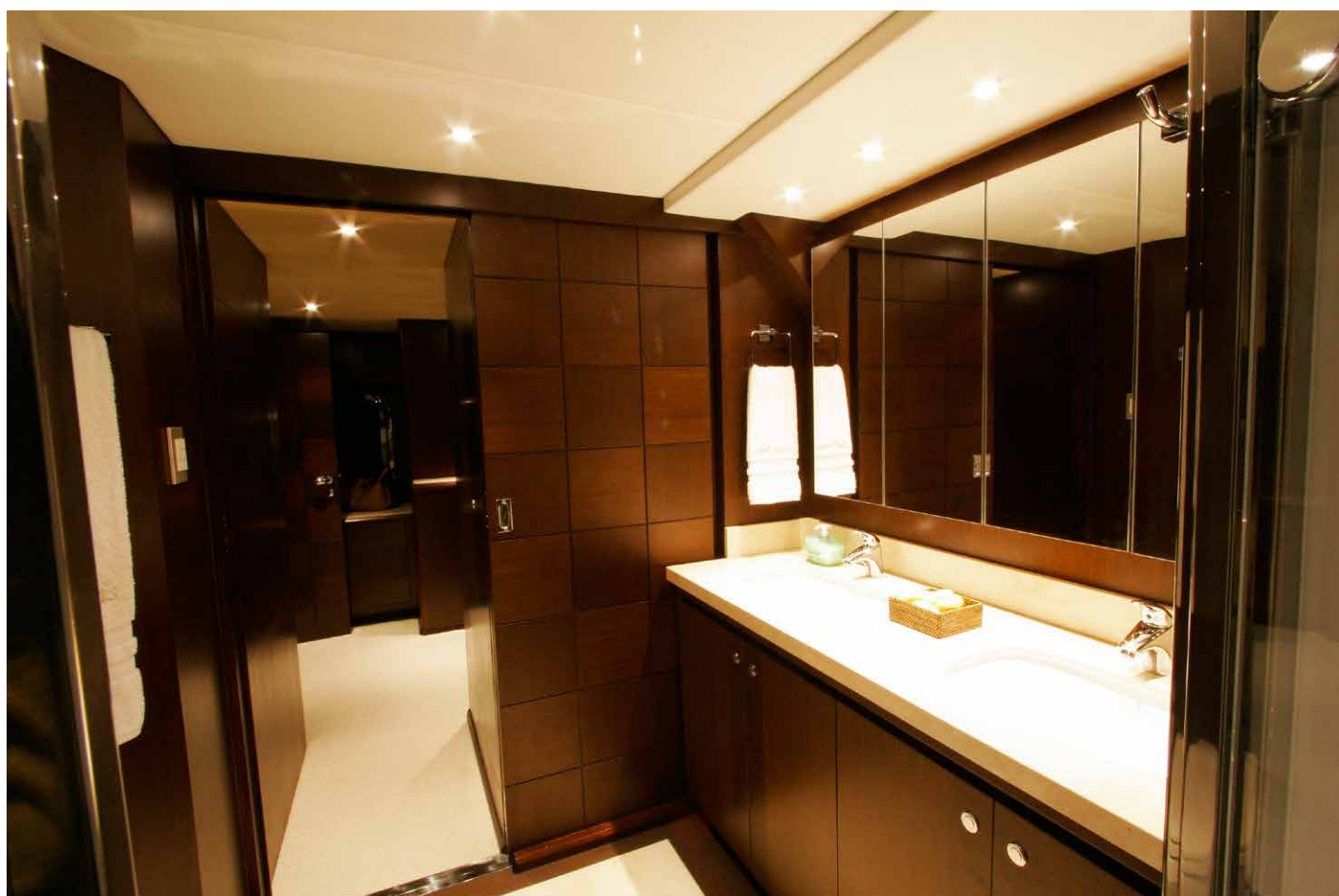




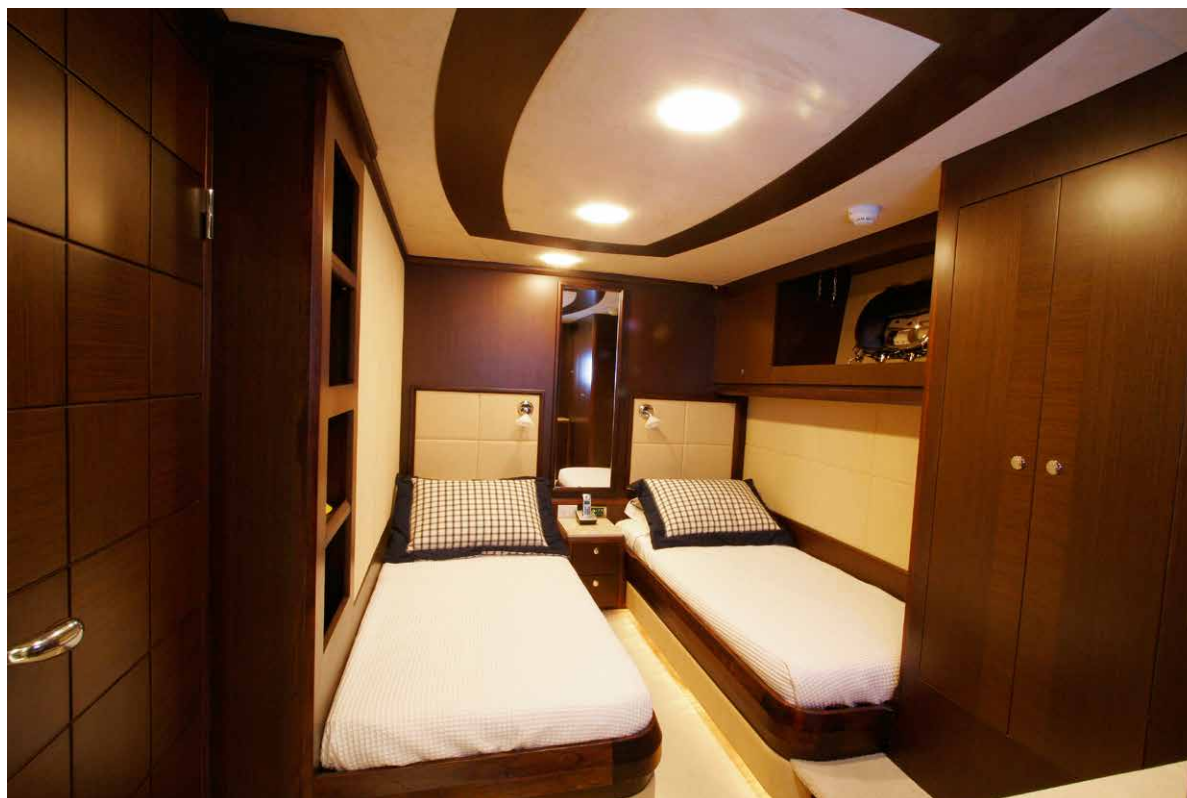
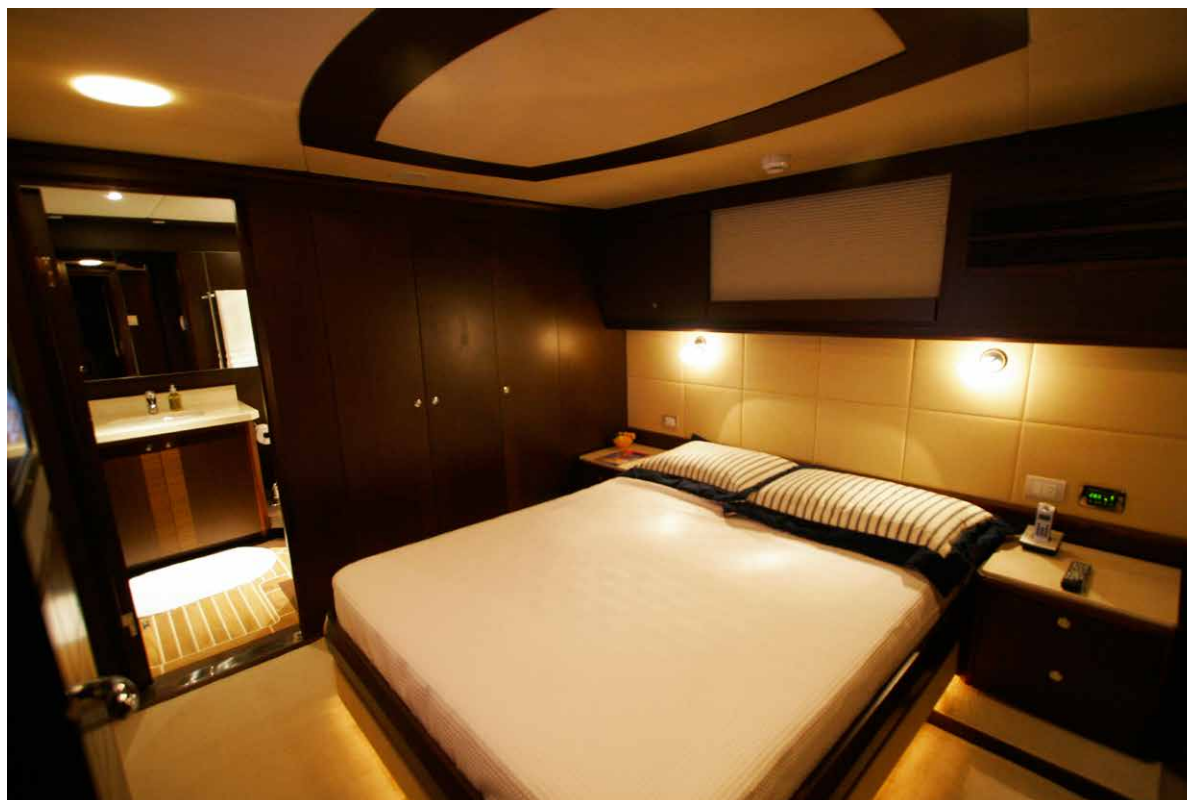
# GFT 92



# GFT 92



## GFT 92





# GFT 92





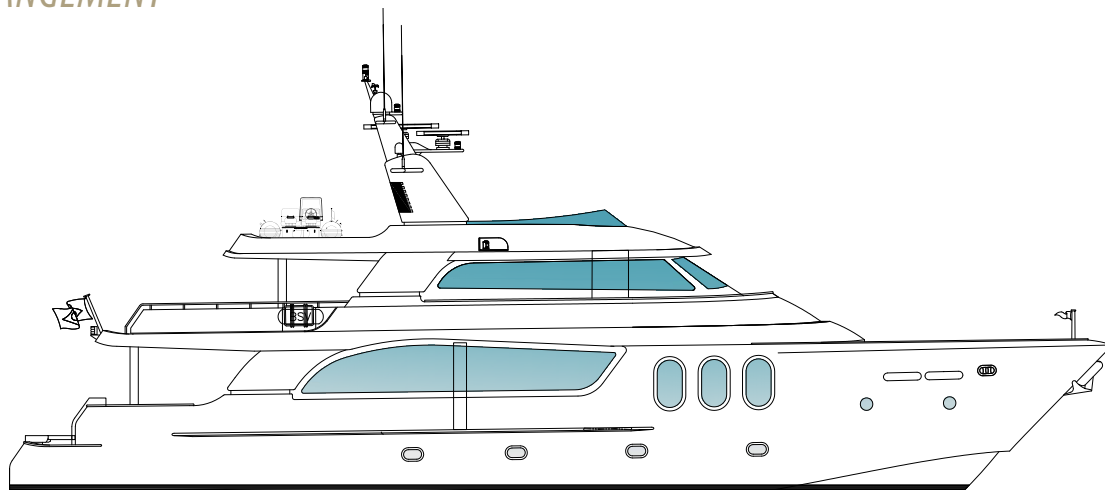
## MAIN PARTICULARS

### TECHNICAL DATA

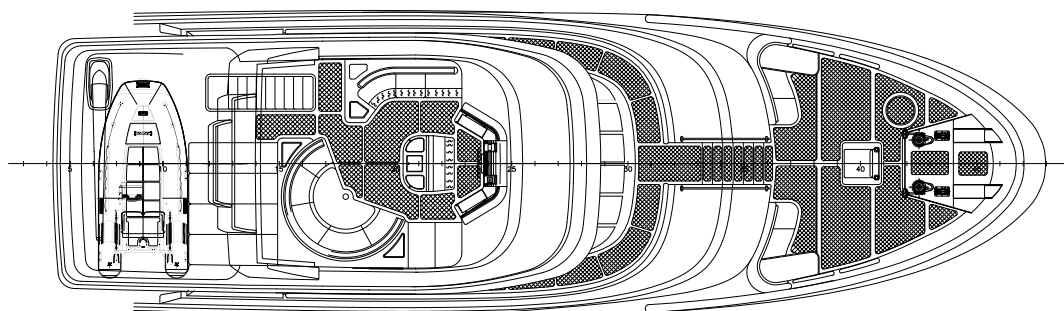
ENGTH OVERALL:	28.04 M	HULL DESIGN:	MCP DESIGN TEAM
LBEP:	22.94 M	EXTERNAL DESIGN:	MCP DESIGN TEAM
MAXIMUM BEAM:	6.58 M	INTERIOR DESIGN:	MCP DESIGN TEAM/OVERSEER YACHTS
MAXIMUM DRAFT:	2 M	THRUSTERS:	BOW AND STERN
MAXIMUM DISPLACEMENT:	95.00 TON	ENGINES:	2 X CAT C32 ACERTS-1725 MHP
LIGHT DISPLACEMENT:	72.00 TON	FLAG:	MCA/MI COMERCIAL
DIESEL CAPACITY:	22,615 L	NIGHT SLEEP:	15
FRESH WATER CAPACITY:	4,258 L	CABINS:	5
FAST CRUISING SPEED:	21 - 26 KNOTS	GUESTS:	11
AUTONOMY:	3,000 NM	HEADS:	8
TYPE:	SEMI DISPLACEMENT	COMMERCIAL CLASSIFICATION	BRA OR INTERNATIONAL
HULL CLASSIFICATION:	LLOYD'S REGISTER	(OPTIONAL):	
HULL MATERIAL:	ALUMINUM		
SUPERSTRUCTURE MATERIAL:	ALUMINUM		

# GENERAL ARRANGEMENT

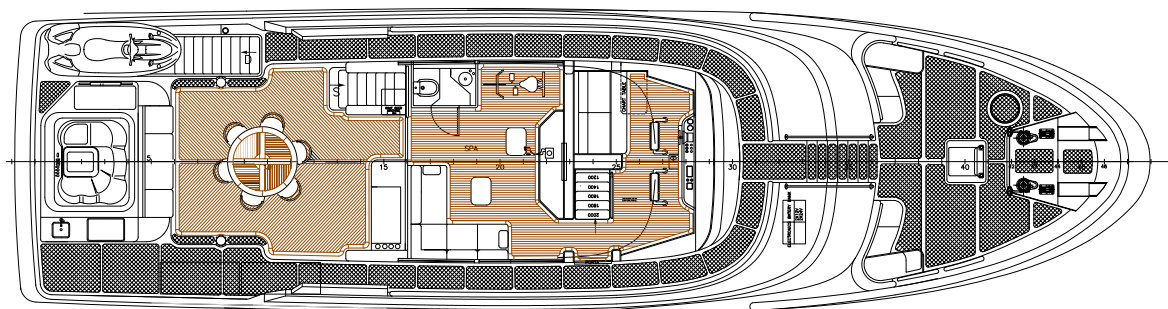
## PROFILE



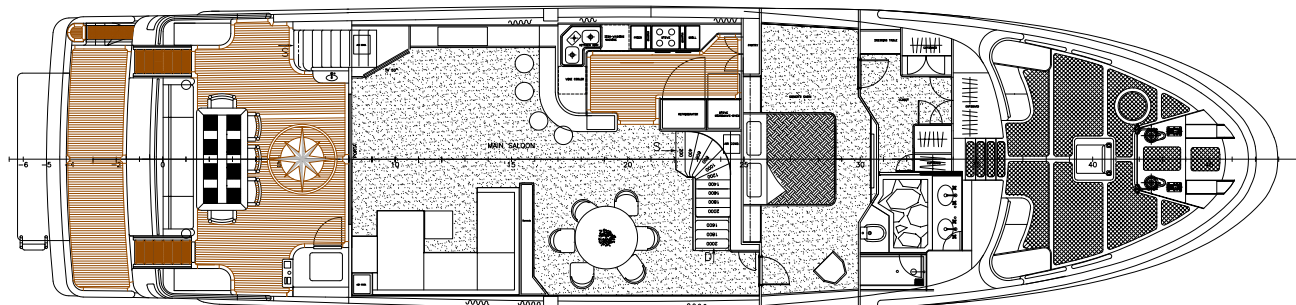
## FLYBRIDGE



## MAIN DECK



## LOWER DECK





RUA HERMÍNIO TAMILOLO, 60

GUARUJÁ, SP/BRAZIL -11420-750

PHONE: 55 13 3354-2169

[WWW.MCPYACHTS.COM](http://WWW.MCPYACHTS.COM)